

## UC S10

### Let's Meet, Soon

Connect with a display to start a teleconference with the app you prefer

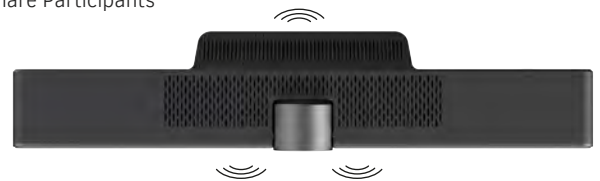
**Teleconference** in ways you like | **Compatible** with numerous teleconference apps



### Think Out of the Box

MAXHUB Wireless Screen-share connects your personal devices to a room display wirelessly. And that is not all

**Dual Mode Wi-Fi** Connects Faster | **Android 8.0** Built-in Smart OS | **LAN Port** Ethernet Connection Available | **Up to 4** Screen-share Participants



### Yes, It Sounds Real

MEMS microphone array together with AGC core algorithm provides high fidelity audio during conferences

**6-element** Mic Array | **8 Metres** Voice Pickup | **Echo** Cancellation | **Noise** Reduction | **Built-in** Speaker | **10W** Empowering the Voice



### And It Sees Clearly

Wide angle lens fits large room layouts  
Auto-framing makes a video conference even clearer, even smarter

**12MP** Camera | **±15°** Vertical Tilting Angle | **F/1.8** Aperture | **120°** Field of View | **Auto** Framing | **Face** Detection | **Voice** Localisation

### Try More Ways

Various ports that come in handy

**USB** | **HDMI** | **3.5mm Audio**



## Specification

### Camera

Sensor	1/2.3 inch CMOS, 12.3MP
Scanning Mode	Progressive
Filed of View (DFOV)	120°
Tilt Range	Up 15°, Down 15°
Focal Length	Fixed
Frame Rate	4K@30fps
Minimal Focusing Illumination	0.05 Lux (@f/1.8, AGC On)
White Balance	Auto
Digital Noise Reduction	2D Digital Noise Reduction
Backlight Compensation	Yes
Camera Mount	Magnet+M12
Features	EPTZ, Auto-framing

### Sound

Maximum Sound Pressure Level (dBSPL)	86dBSPL@1m, 1 kHz
Frequency Range (-10dB)	150Hz~15kHz
Total Harmonic Distortion	≤5%
Signal to Noise Ratio	≥75dB
Speaker Channel	1
Output Power	1×10W

### Microphone

Number of Microphones	6
Microphone Type	MEMS
Pickup Range	8 Metres
Frequency Response	100Hz~7.5kHz
Pickup Angle	180° front
Features	Noise Reduction, Echo Cancellation

### USB

Operating System	Windows 7 (Up to 1080P), Windows 8.1, Windows 10
Hardware Requirement	2.4GHz Intel®Core 2 Duo Processor or above
	2GB RAM or above
Colour System/Compression	H.264/YUY2/MJPG
Video Format	4K@30fps/25fps, 1080P@30fps/25fps, 720P@30fps/25fps, 960×540P@30fps/25fps, 640×360P@30fps/25fps, etc
USB Video Communication Protocol	UVC 2.0

### Input/Output Interface

Earphone	1×3.5mm Earphone & Mic In
HDMI	1×HDMI1.4
Internet Connection	Ethernet: 1×RJ45(10/100Mbps), Wi-Fi: 2.4G/5G Dual Band Wi-Fi
USB Interface	1×USB 2.0: Type C, Female
	1×USB 3.0: Type A, Female
DC In	1×DC 2.0

### Built-in System

Processor	2×A73+2×A53
Memory	4GB
Storage	16GB
Audio DSP	ARM 4×A35
Operating System	Android 8.0
System Feature	Wireless Screen-share

### Power

Input Voltage	12V
Power Consumption (Typ.)	20W
Current Consumption	3A

### Environment Requirement

Operating Temperature	0°C~40°C
Storage Temperature	-20°C~60°C
Humidity	10%~90%RH

### Physical Specification

Size	465mm×91mm×57mm
Net Weight	1300g